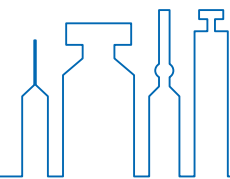




D2Mix™

- Vial to Syringe
- Vial to Vial to Syringe

Simpler and safer reconstitution processes.



Contact us

NIPRO CORPORATION PharmaPackaging Division

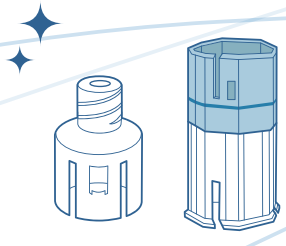
Head Office 3-26, Senriokashinmachi, Settsu, Osaka, 566-8510, Japan TEL: +81-6-6310-6571
Tokyo Office 4-3-4, Hongo, Bunkyo-ku, Tokyo 113-0033, Japan TEL: +81-3-5684-5611
Web Site <https://en.nipro-pharmapackaging.jp/>



Product Overview

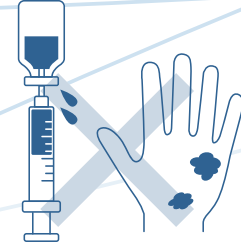
Sterilized devices for reconstitution of vial formulations (liquid, powder, lyophilized product) with solution for dissolution, supporting simple and safe preparation for administration.

Simple



Simpler and safer reconstitution procedure.

Less risky



Prevention of contamination and reduction of expose.

Safe



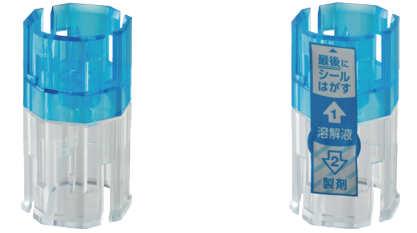
Needleless procedures.

Vial to Syringe



Reconstitutions with one vial and a syringe.

Vial to Vial to Syringe

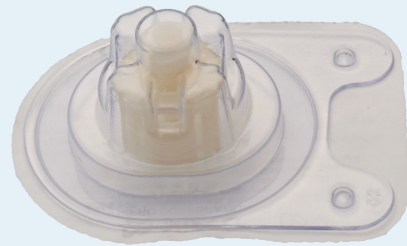


Reconstitutions with two vials for withdrawal with a syringe.

Blister Packaging

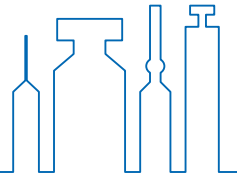
Without directly touching device.

Easy to hold.
Easy to connect to vials.
Easy to detach from vials.



Vial diameter (mm)	Filter
13	No filter
20	No filter or In line liquid filter (Under Development)

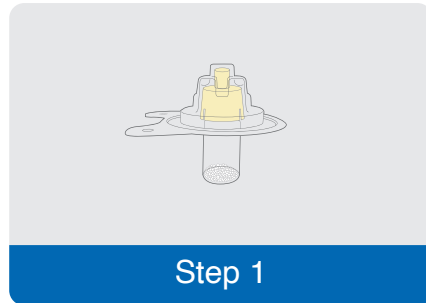
Vial diameter (mm)	Filter
20	No filter
20	In-line liquid filter and Vent filter



Recommendation For Use

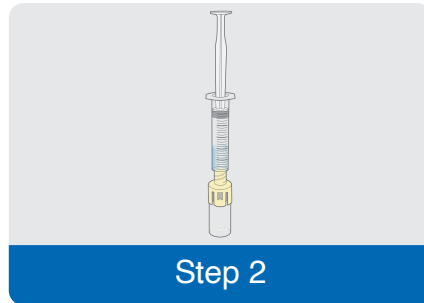


Vial to Syringe



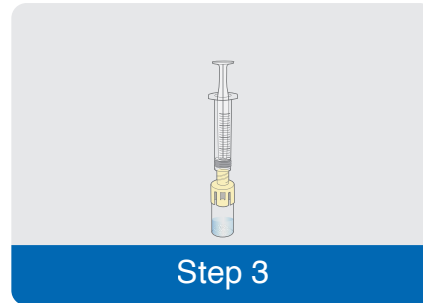
Step 1

Connect device to medicine vial.



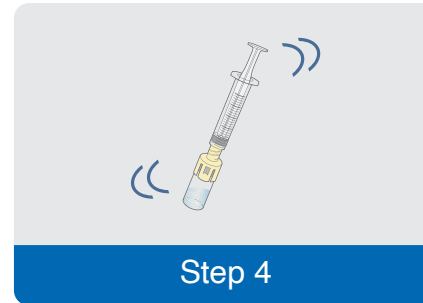
Step 2

Connect syringe filled with solution for dissolution to device.



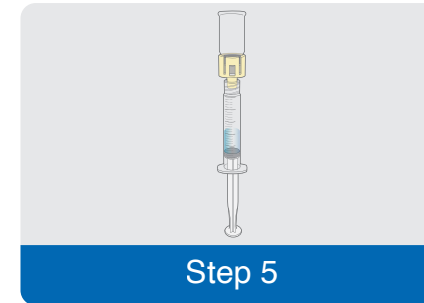
Step 3

Transfer solution for dissolution to vial.



Step 4

Ensure drug solute is fully dissolved.



Step 5

Draw drug solute into syringe and separate from device.



Please scan the QR code to see how to use.

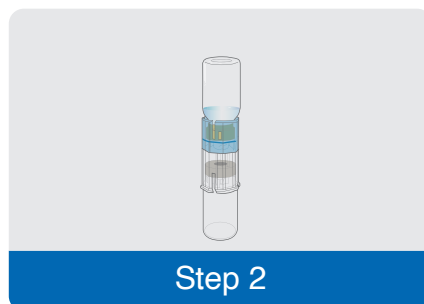


Vial to Vial to Syringe (No filter)



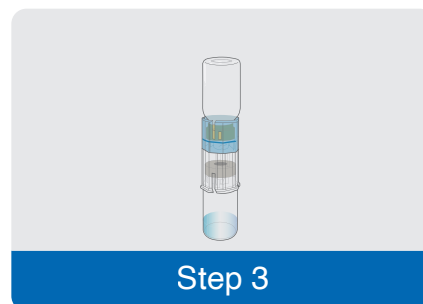
Step 1

Connect device to dissolving solution vial.



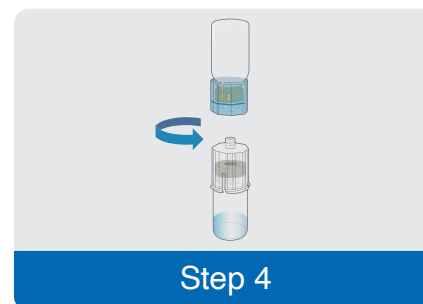
Step 2

Connect device to medicine vial.



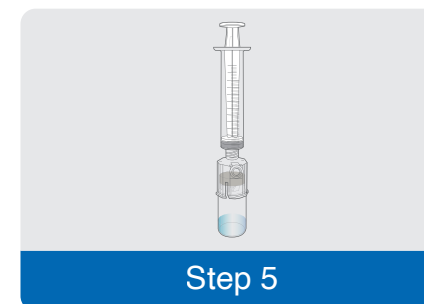
Step 3

Transfer solution for dissolution to vial to dissolve drug.



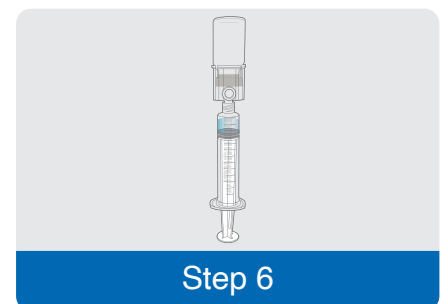
Step 4

Detach empty vial by twisting anticlockwise.



Step 5

Connect syringe to device.



Step 6

Draw drug solute into syringe and separate from device.